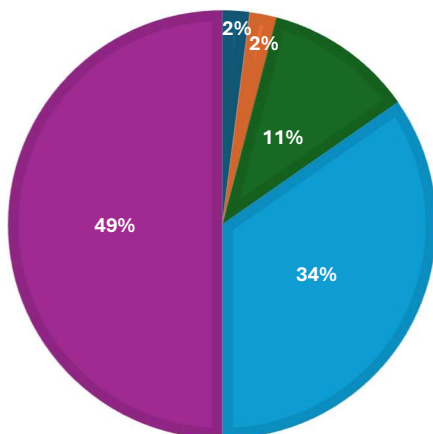


2025 Parish Family Household Census Summary

Thank you to the 677 responding households (representing 1,834 parishioners) that participated

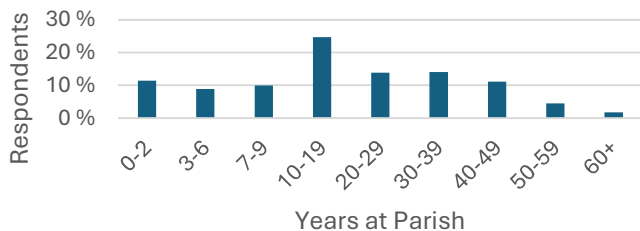
Who We Are

LIFE STAGE



- Young Singles (under 35)
- Emerging Adults (35 - 44 and no children under 18)
- Young Families (age < 44 and 1+ children under 18)
- Mid-Life (45 - 64)
- Seniors (65+)

TENURE



- 58% of households have 1-2 members
- **70% have worshipped here 10+ years**
- Median age of parishioner – 56 yrs

Parish Involvement

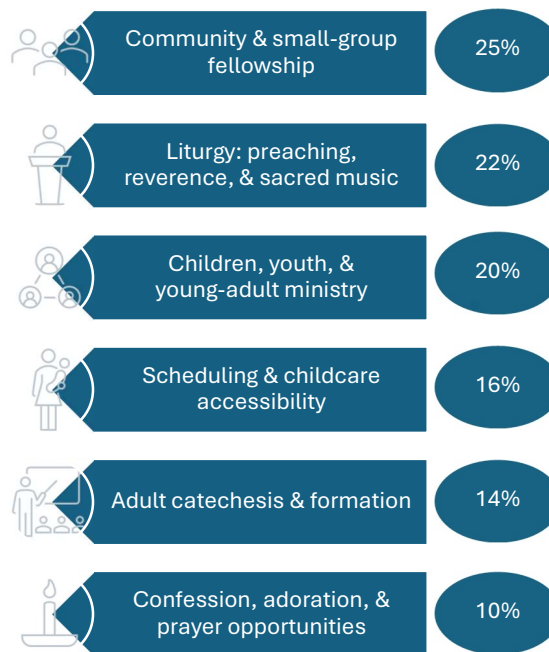
- 46% of households currently serve in a parish ministry; another 23% are willing but idle
- 23% say particular circumstances inhibit fuller parish participation
- 47% of households have formed meaningful parish friendships that strengthen their faith
- 40% sometimes participate in parish events outside Mass; 34% often/always do

Faith Life at Home

- 73% say a visitor would clearly notice Catholic signs in the home
- 75% of households fully identify as Catholic
- 20% of Catholic teens/adults **unconfirmed**; half of those come from fully Catholic households
- Among households with adult children, 30% report all their adult children no longer practice the faith, 38% some no longer practice (68% affected in all)

Helping Families Grow in Holiness

"Is there something the parish could do better (or start doing) that would help your family to grow in holiness?"
% of respondents



Key Insights

- Most households demonstrate engagement through long tenure, financial support, and ministry involvement
- One in four parishioners explicitly crave relational small-group life
- A significant share of adult children no longer actively practice the faith